

mobile easykey® indoor locator - user guide

Document Version 2.0

Contents

Requirements	1
Software requirements	1
Network requirements	1
Installation	1
Configuration	2
Connection to MEKM	2
Other options	2
Configuring the Screen areas	3
Add Config button	3
Delete Config button	4
Add Area button	4
Delete Area button	5
Delete all areas button	5
Background button	5
Save and close button	5
Importing / exporting the configurations	5
Settings	6
Appearance Settings	6
Behavioral settings	8
Live-View mode	9
Starting	9
Searching	10
Leaving	11

Requirements

mobile easykey® indoor locator complements your mobile easykey® solution, in particular mobile easykey® manager.

Software requirements

mobile easykey® indoor locator is a Windows¹-based application and works with Windows 7, 8 or 10.

It requires:

- A current version of mobile easykey® manager (MEKM)
- Microsoft .NET Framework v4.5 (Installable from <http://go.microsoft.com/fwlink/?LinkID=186913>)

Please make sure that the requirements are fulfilled before running the application.

Network requirements

The computer must be connected to the server running MEK service or MEK Manager.

Installation

Usually this software comes bundles with MEKM. For manual installs, please use the enclosed installation wizard.

¹ Windows is a registered trademark of Microsoft Corporation in the United States and other countries.

Configuration

Configuration has to be done the first time the program is used and each time the used drivers in MEKM change or the display options should be changed.

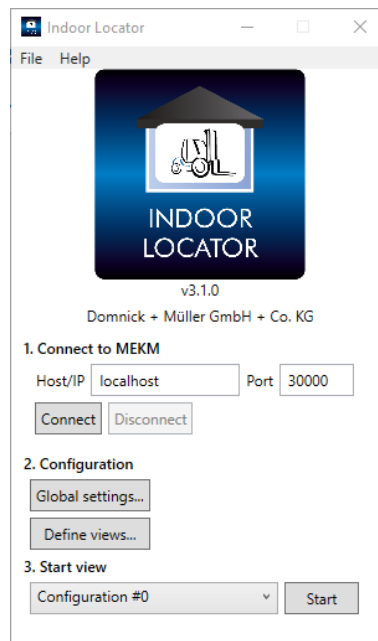


Image 1: Startup window

Connection to MEKM

EasyKey Panel creates an outgoing TCP connection to MEKM or MEK Service to be able to receive events. You can configure the host and port on which MEKM is listening.

This information is entered in two separate text fields:

Field	Description	Default
Server IP/Host	The host where MEKM3 is reachable from the local PC. If MEKM is running on the same PC, enter „localhost“.	-
Port	The port on which MEKM is listening for connections.	30000

Note: The current connection state (which may differ from the desired state) is shown below. The software will try to reconnect if the connection is lost at any time.

Other options

Other options on the screen are as follows

1. **Global settings** button: It opens a setting window which can be used to configure the behavior and appearance related settings for the vehicle display list. It is explained further in detail.
2. **Define Views** button: It opens a Configure area screen window where user can add new views with desired number of areas, edit existing views, select background images for different screens etc. This functionality is explained in detail in the next chapter.

3. **Start** button: It opens the display window with a desired view which is selected from the dropdown List.

Configuring the Screen areas

Screen layout is defined in Configure Views window. This window is opened by clicking the Define Views button on the startup screen. The figure below shows a “ConfigureView” Window.

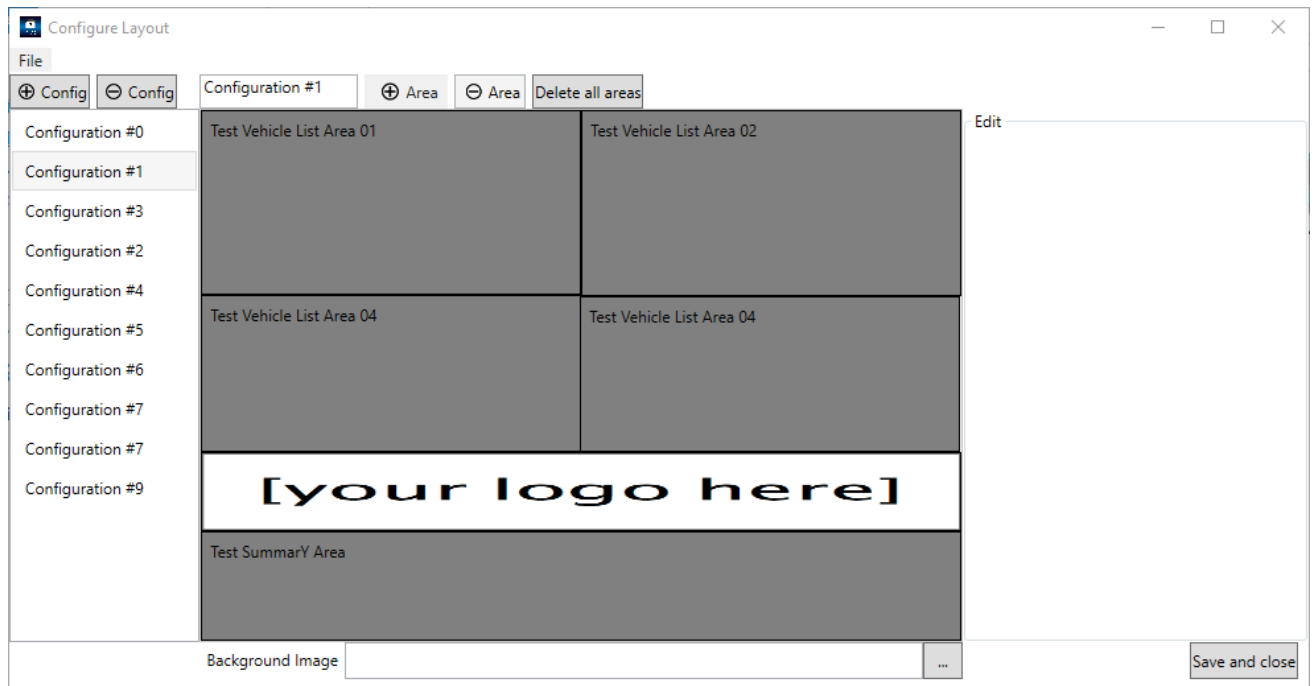


Image 2: Configure View window

The different options available on this screen are explained as follows:

Add Config button

A new view can be added by clicking Add button in the top left corner. Clicking this button opens a wizard as shown in image below to select the type of view to be added.

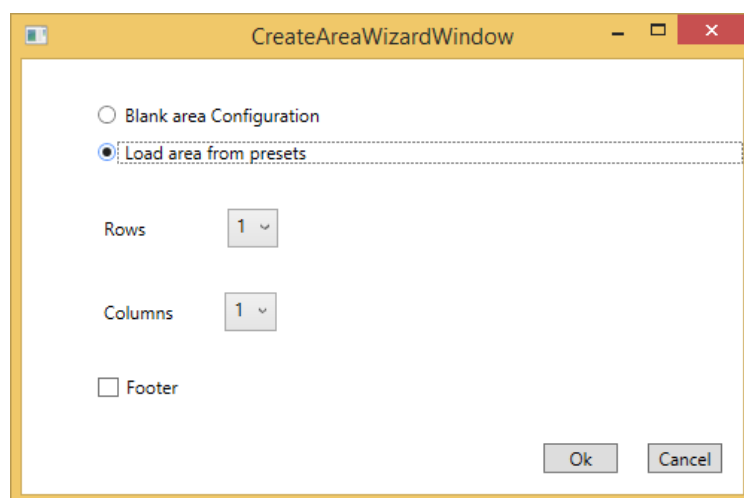


Image 3: Create new View Wizard

You can either select a blank empty view or load view from presets. If you select a 'blank area configuration' option, an empty view without any areas is created. New areas can now be added by clicking the Add area button on the top and selecting the appropriate type of area to add. You can resize/reposition the areas as desired using your pointing device (e.g. mouse).

If the second option "Load area from presets" is selected, you have to give the number of rows and columns via the respective dropdown lists. Additionally you can select if the footer is to be displayed by checking the Footer checkbox. After clicking OK a new view in form of a grid of resolution RowsXColumn (whatever numbers you had selected eg. 3x5) is created. You can later remove, add, resize and reposition a desired area from this grid if required.

Delete Config button

You can remove a desired configuration/view from the saved lists by selecting any of the configuration and clicking this button.

Add Area button

You can add an area to a configuration/view which is selected in the saved list of configurations using this button. Clicking this button will reveal the drop-down list with three different area types (detailed below) to add, clicking on any of them adds the area on configuration screen. Depending upon the area type you've created, you can see different options to further configure those areas. These options can be seen on the extreme right side of the configuration window. The types of area available to add, functional usage of each area type and the options available for their configuration are as follows:

Vehicle List Area

This area type can be used to list statuses of vehicles reported on selected driver for this area. The different configuration options available for this area are:

Field	Description	Default
Name	Used for naming a selected area	
Driver	Select the state of which MEKM driver should be shown in this list	-
Wifi access point	You can specify which access points are near to the configured location to achieve finding out the location of a module using WiFi.	
Stati	Select modules with which stati should be shown in this list. You may choose to show all, just a single status or combinations. Please note, that some stati are available multiple times with differing orderings.	Off, On, Out of range (all modules)
Order alphabetically	If there are multiple vehicles inside the same status they are ordered by the time their status is lasting by default. Check this box to order by alphabet instead.	Unchecked
Footer	If you want the selected list to contain an individual footer that summarizes vehicle numbers, you can select the desired information here.	Off
With status names	Activate this check box to show status names along the summarizing numbers in the footer.	Checked

Vehicle Summary Area

This area type can be used to summarize the configuration. You can select the current configuration or some other configuration to summarize within the current view. If you select some other configuration, then you can simply navigate to that configuration by clicking on this area during the live-mode. The different configuration options available for this area are:

Field	Description	Default
Name	Used for naming a selected area	
Configuration to Summarize	List of the configurations you can summarize within this area.	-
Values	Values of the vehicle's statuses to be summarized.	(disabled)

Image Area

This area type can be used to display a logo or any image within configuration, you can select any image to view within this area. The different configuration options available for this area are:

Field	Description	Default
Image Path	Browse for the image you want to display in this area. You can use this space for logos or other images to be displayed within your workspace/configuration.	-

Delete Area button

You can remove a selected area from a selected view using this button.

Delete all areas button

You can remove all areas from a selected configuration using this button, since this is not undoable operation so you would be prompted for if you really want to clear. The resultant configuration would be an empty view with no areas.

Background button

You can select an Image as a background for a particular view using this button. Clicking on '...' button next to the image path textbox would let you browse through your system, select any image of your choice and that would be saved as background for the currently selected configuration.

Save and close button

By clicking his button you can save and exit from the configuration window once you are done with the configuring the screen areas or simply closing the window would do the same.

Importing / exporting the configurations

User can also import configurations from xml files and vice-versa using the import/export fields from the Data menu in the upper left corner.

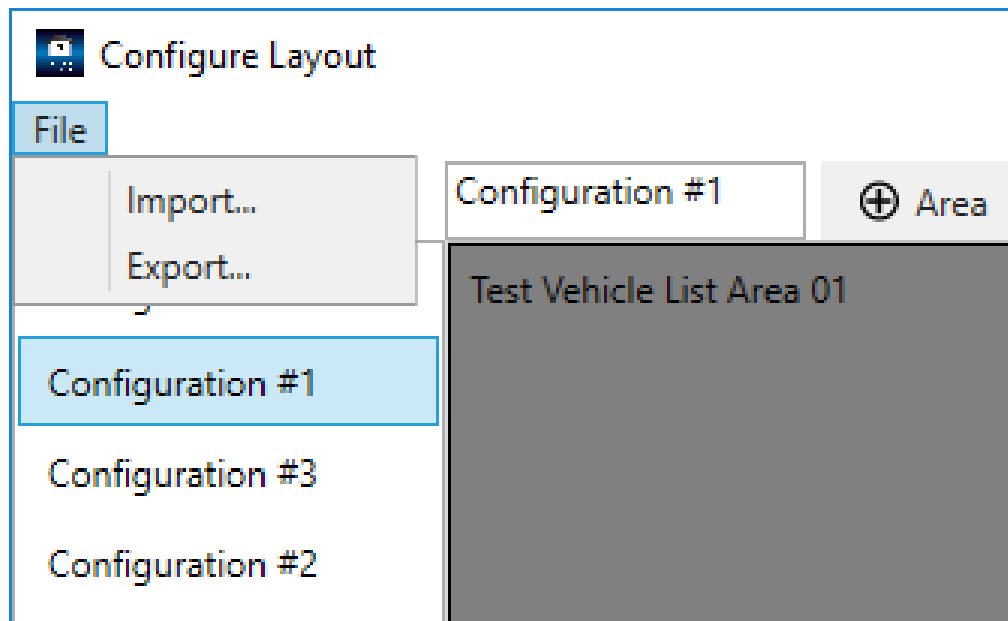


Image 4: Data Menu (Import/export configurations)

Settings

You may fine tune the display appearance/behavior in a separate window that you can open by clicking on "Global Settings" in the main startup window.

Appearance Settings

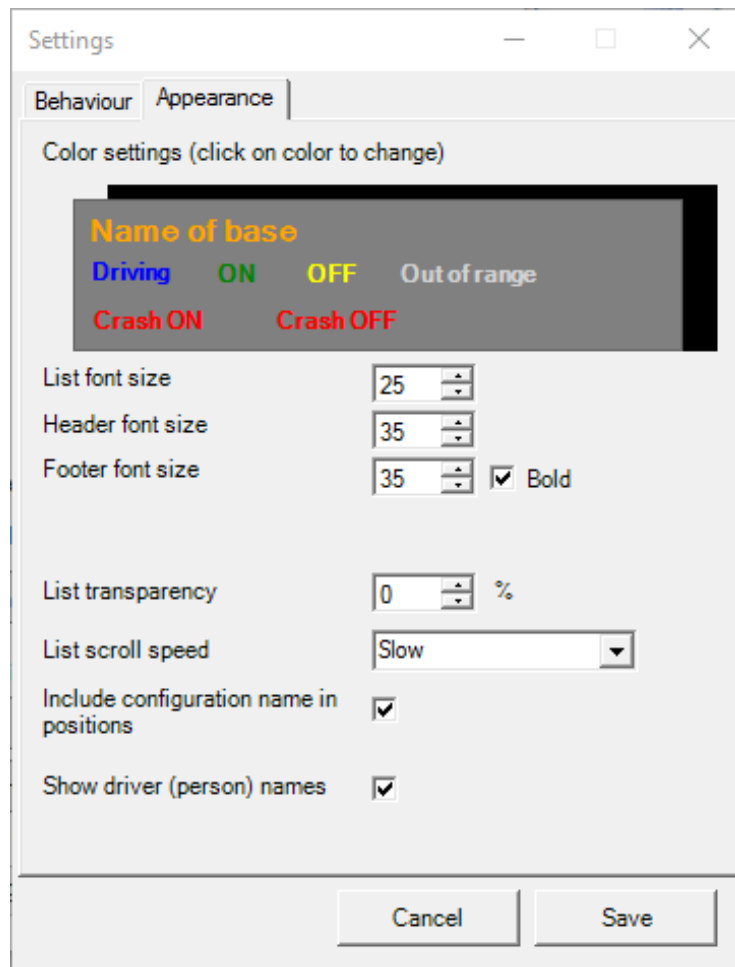


Image 5: Settings window (Appearance settings)

Color settings

A small preview of which colors will be used by the display is shown in the main configuration window. Click on any colored heading/text to change it by selecting the appropriate color from the color picker.

Note: There are two background colors (list background and global background) that can be changed here as well.

Font sizes

Select a font size for the rendered text in the display to the right. Different sizes for headings, content and footer can be specified. Bold can be enabled on footer using the given checkbox.

List transparency

If the lists should not be rendered opaque, i.e. the background shines through, you can specify the amount of transparency of all lists here. The values range from 0% (opaque) to 100% (list is not visible).

List scroll speed

If the number of vehicles in an area exceeds the available space for display, the list starts scrolling continuously up and down. You can control the scrolling speed for the lists using the drop down list.

Behavioral settings

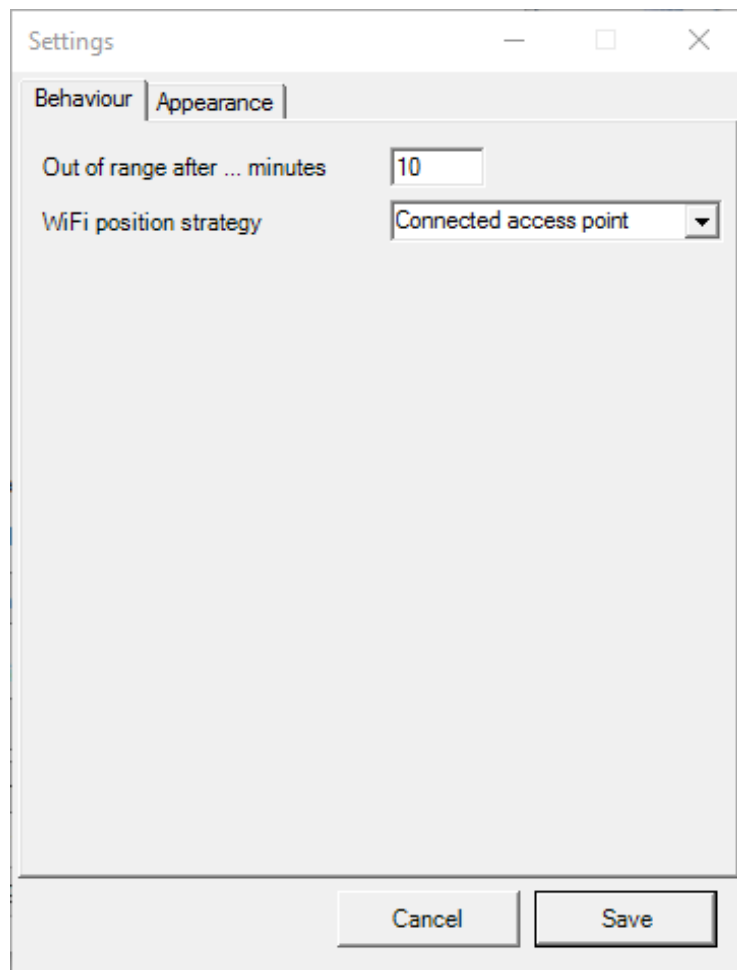


Image 6: Settings window (Behavior settings)

Out of range time

Vehicles with EasyKey are repeatedly reporting their status to the next access point. If they are out of range they may fail to do this. Out of range time specifies after how many minutes EasyKey Panel should assume that a module is out of range because it hasn't sent a state. The optimal settings is dependent on your mobile easykey® setup and configuration. Contact your distributor for further advice.

Wi-Fi position strategy

You can define the position strategy of Wi-Fi by selecting one of the options available:

- a. Connected access point
- b. Strongest signal

Live-View mode

Starting

Click on Start button in the startup window after selecting the desired view configuration to enter full screen display mode. You should be connected to MEKM and have a configured layout before proceeding. The Display window can be viewed in two modes as shown below

1. Window mode

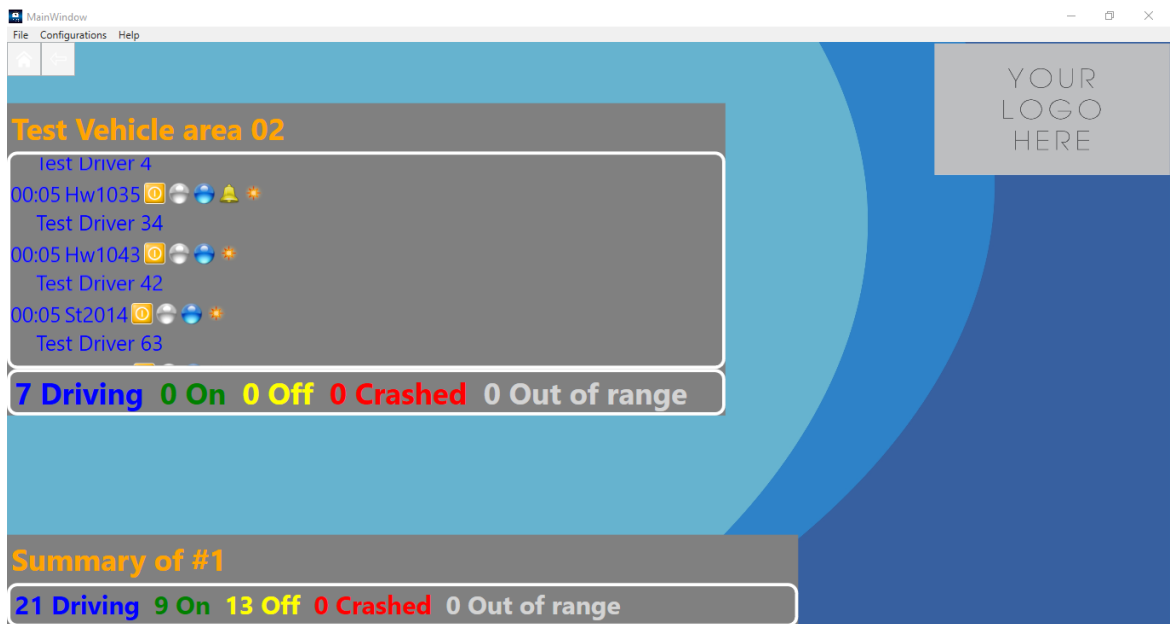


Image 7: Display window (Window mode)

2. Full Screen mode



Image 8: Display window (Full screen mode)

In the window mode, three menus in the menu bar can be seen, that are described as under, there are keyboard shortcuts within the brackets in front of each option to fast access those options or use them in full screen mode:

1. File Menu: This menu has four further sub menus:
 - Enter Full screen (ENTER): You can toggle between Window mode and full screen mode using this submenu.
 - Find Vehicles (F): This sub menu opens the Search window to find vehicle within any of the configuration.
 - Exit to Configuration: If the application is started using MEKM, then this sub menu will exit the current view and open the configuration, in a normal-run this menu will simply close this view window.
 - Exit (ESC): This submenu allows the user to exit from the display window and if the application is started using the MEKM, then clicking this sub menu will exits application.
2. Configurations Menu:

You can switch between the configurations using this menu. You can also switch to the previous configuration or the home configuration (from where you started) using the home and back buttons present on the top left corner of the screen.
3. Help Menu
 - User Guide (F1): This opens the user manual.
 - About (A): This opens the owner's information of the application.

Searching

While in full screen display mode you may open the Search dialog by pressing the F key on your keyboard or clicking Find from the file menu in the window mode. When the search dialog is open, just type a part of the desired vehicle name to display if it is known and where it is. Single clicking on any of the available vehicles or just selecting using your cursor keys would highlight the area where this vehicle resides (if it lies within the currently opened configuration). If you've selected the vehicle and none of the area is highlighted, then the vehicle might exists on some other configuration. Hitting enter key or double clicking on the vehicle will navigate you to the configuration where it lies and highlight the area it lies within.

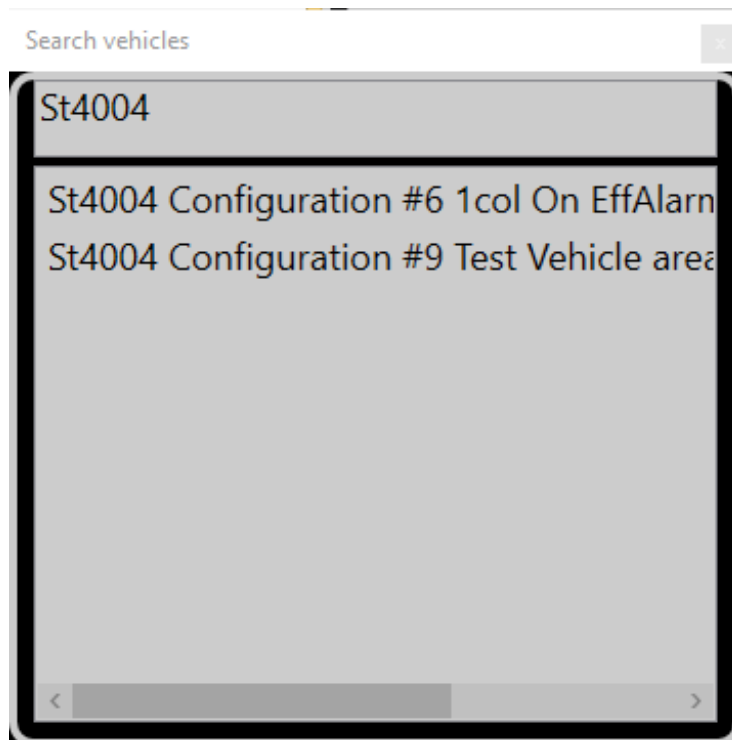


Image 9: Search window

Leaving

You can leave the live mode by pressing ESC key or by clicking Exit from the File menu. For exiting the application you can click the exit option from the file menu in the startup window.

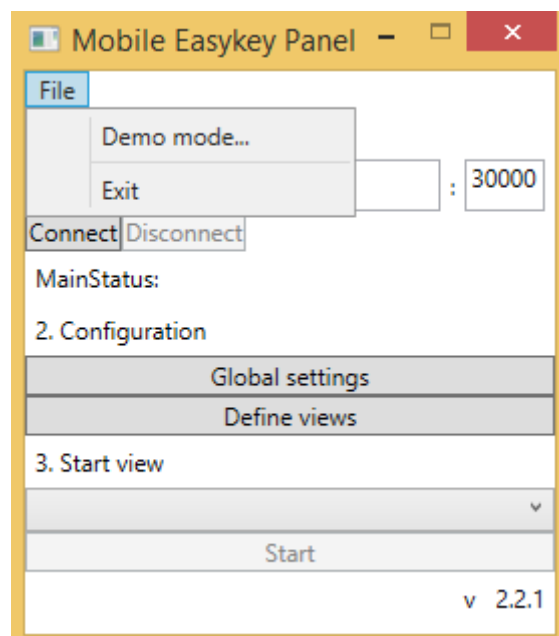


Image 10: Startup window (Exit)